



YOUR DREAM WEDDING  
STARTS HERE

# *HISTORIC SHADY LANE*



*CENTRAL PA WEDDING VENUE*  
specializing in outdoor weddings since 2012

© AMANDA NAYLOR  
PHOTOGRAPHY





# CONTENTS

2

## BRIDAL SUITES

The cottage and den are here for hair + makeup or kicking back with a drink for the day

10

## CEREMONY SITES

Whimsical backdrops to fit any couples' wedding style

17

## COCKTAIL HOUR

Drinks, appetizers + music under cafe lighting by the greenhouse

21

## RECEPTION

An elegant tented area for eating, drinking + dancing all evening

27

## DETAILS

Venue information, packages + pricing options





© BEKAH KAY  
CREATIVE

# *THE COTTAGE*

## **THE PERFECT PAMPERING SPOT**

Built in 1911, the cottage served as the home to Frederick Small's spinster sister. This building is home to our bridal suite and includes the original windows which allow the natural sunlight to shine in. This alluring stone retreat with its hand-picked vintage pieces will provide you with privacy, comfort, and a perfect setting for photographs with your friends and bridal party. Enjoy being pampered and the stress-free feeling of having your stylists come to you in our salon suite!

Whether you're from out of town or are our neighbor, the Cottage is your private paradise for the entire day of your wedding. Complete with separate salon, private suite, and bridal party suite as well as a full kitchen and bath, your photographer can capture every moment leading up to your "I Dos" while you relax and enjoy the vintage charm filling every room in the cottage.

Amenities Include:

- Fully outfitted kitchen
- 1 full + 1 half bath
- Salon suite for hair and makeup
- Dressing rooms
- WIFI
- Vintage Decor, perfect for photographs





## ALL DOLLED UP

#hslbride Christina  
getting hair + makeup  
done in the salon



© LAUREN FAIR  
PHOTOGRAPHY



## MORNING MIMOSAS

#hslbride Morgan  
toasting with her ladies



© TORI RADICK  
CO.





## MAKE IT YOUR OWN

#hslbride Sara bringing  
our Pinterest dreams to  
life



© EARTHMARK  
PHOTOGRAPHY





© KATIE KING  
PHOTOGRAPHY

# *THE DEN*

## FUNCTIONAL AND FUN

Located under the patio of the Main House, the den is the estate's second bridal suite. Complete with a full kitchen and bath, your second half won't have to stress about getting ready in a hotel and then making it to the ceremony on time.

The den opens to a large shaded patio and has a beautiful view of the grounds. The Den and Cottage are far enough apart, photographers can take you out separately for photographs without worrying you'll bump into one another before the time is right.

You and your bridal party are sure to have a good time getting ready while playing some cards, throwing some darts and toasting to a new journey together!

### Amenities Include:

- Fully outfitted kitchen
- 1 full bath w/ shower
- Dart board
- Foos ball table
- WIFI
- Vintage Decor, perfect for photographs





## THE DAY IS YOURS

#hslgroom Kevin + his  
groomsmen enjoying  
time together before the  
big moment



© BEKAH KAY  
CREATIVE



## KICK BACK OR PLAY

#hslgroom Corey playing  
foosball with the boys



© VINCE HA  
PHOTOGRAPHY





## CELEBRATE THE DAY

#hslgroom Dakota + his  
groomsmen toasting in  
celebration



© RACHEL RUHL  
PHOTOGRAPHY





# *CEREMONY SITES*

## **WHIMSICAL BACKDROPS FOR EVERY STYLE**

With a sprawling 34 acres, your guests will be treated with historic stone backdrops, forests and gardens, and a gorgeous glass greenhouse. We have buildings from 3 different centuries on the estate, and each have a story to tell. With lush landscaped grounds, your ceremony will have a beautiful backdrop without having to purchase any extras! Let nature paint its own canvas. The stone and glass greenhouse offers panoramic views of the estate; host your intimate ceremony or event here, or have cocktail hour in this gorgeous feature.

At Historic Shady Lane, we're not about cookie-cutter weddings and no wedding is the same. We know that what works for one couple might not work for the next, which is why we offer multiple sites for your ceremony.

Choose one of ours or pick a new one!

Official ceremony sites:

- The Rose Garden
- The Bandstand
- The Greenhouse Terrace
- The Woodlands
- The Gardens
- The Greenhouse





## THE ROSE GARDEN

the perfect mix of green landscapes + stone features



© AMANDA NAYLOR  
PHOTOGRAPHY





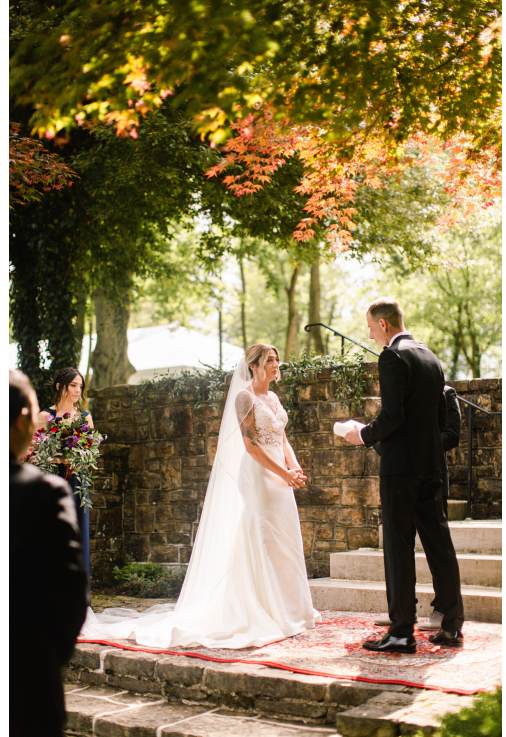
## THE BANDSTAND

early 20th century charm  
with a bohemian touch



© TORI RADICK  
CO.



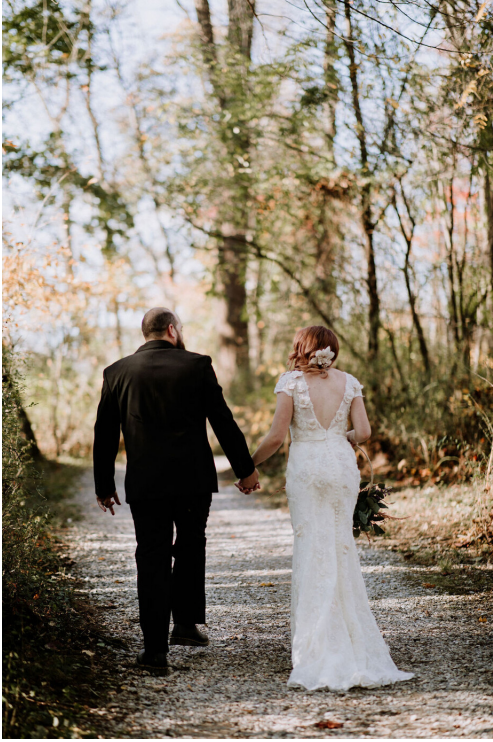


## THE GREENHOUSE TERRACE

a cozy setting with  
an even dreamier  
backdrop







## THE WOODLANDS

a wooded cove tucked  
away in the forest



© EARTHMARK  
PHOTOGRAPHY





## THE GARDENS

a cozy setting with  
an even dreamier  
backdrop



© TRINITY WALKER  
KEEFER





## THE GREENHOUSE

a modern industrial  
space with rustic charm



© CAMBRIA CREATIVE  
PHOTOGRAPHY





© PHILTER  
PHOTOGRAPHY

# *COCKTAIL HOUR*

## **A MODERN-INDUSTRIAL SPACE FOR YOUR GUESTS**

The gem of Historic Shady Lane , built in 1890 by Lord & Burnham, the glass and stone greenhouse is the perfect setting for guests to enjoying their cocktails and appetizers while waiting for the reception festivities to begin. Adorned with crystal chandeliers and twinkling white lights, the greenhouse is sure to be the talk of the party.

Guests are welcome to grab a drink and walk the grounds during this time, enjoying the outdoor scenery and friendly gatherings.

Features include:

- beautifully tiled open-concept space
- two outdoor patios
- crystal chandeliers + cafe lighting
- garden house room w/ fireplace





## EXPLORE THE OUTDOORS

ivy-covered trees +  
luscious landscaping



© BEKAH KAY  
CREATIVE



## PLAY A GAME

grassy areas for corn  
hole, ladder golf + more



© ASHLEY & JUSTIN  
PHOTOGRAPHY





## ENJOY THE COMPANY

enjoy food, drinks + time  
with family + friends



© AMANDA  
NAYLOR  
PHOTOGRAPHY





© PHILTER  
PHOTOGRAPHY

# *THE RECEPTION*

## **AN ELEGANT TENTED OUTDOOR CELEBRATION**

Our elegant reception tent measures 40x100 feet and provides the perfect canvas for any wedding theme. Complete with crystal chandeliers and a beautiful entry way, your guests will enjoy dinner and dancing all evening long!

The moment the guests have been waiting for! The food and the party.

Features include:

- crystal chandeliers
- cement flooring
- folding tables + white resin chairs
- curtains w/ quick open + close
- catering tent
- 10ft wooden bar





## A BLANK CANVAS

crystal chandeliers +  
white draping for your  
backdrop



© ALEXA ANN  
PHOTOGRAPHY



## GREET YOUR GUESTS

a built-in large entryway is the perfect welcome



© PHILTER  
PHOTOGRAPHY





## PRE-MADE BAR SET UP

we're BYOB, but the area  
is already done for you,  
so no need to bring your  
own





## THE GAZEBO

for those that need some  
quiet time away from the  
music



© PHILTER  
PHOTOGRAPHY





## THE FIRE PIT

the best spot s'mores ,  
hot dogs or warming up  
on a chilly evening







© BEKAH KAY  
CREATIVE

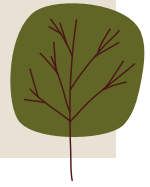
# *VENUE DETAILS*

## **MORE ABOUT US**

- Our tent and greenhouse are not climate-controlled, however we do provide fans for warmer days and heaters for colder days.
  - Our maximum guest count is 225.
  - All tables and chairs for ceremony, cocktail hour and reception are included in our package price. We do not have linens available.
  - We are non-exclusive with most vendors, including for catering and bartending, so you may hire anyone you'd like (however, we do require a serve-safe certificate) We do not have any in-house catering options available.
  - For bar, you may bring in all of your own alcohol! It just has to be served by an insured bartender.
  - We do require that all couples have a day-of wedding coordinator chosen from a list that we work with (as they make it SO much easier for our couples), but you may choose anyone that you'd like from the list.
- See below:
- [Taryn Blake Events](#)
  - [Sapphire Road Weddings](#)
  - [Peachy Keen Event Rentals & Design](#)
  - [Simply Events Inc.](#)
  - [That's It! Wedding Concepts](#)
  - [Tasteful Occasions](#)
  - [Events by Gillian](#)



# THE INTIMATE PACKAGE



## AMENITIES:

Private, 34 acre estate to host the wedding and do photographs; no tours or other events during your rental period

### Accessibility Times + Guest Count:

- 11 a.m. to 10 p.m., music off at 9 p.m. on Fridays and Sundays only (\$6,300 before tax)
- 75 guests maximum

Separate bridal suites for the couple (the den + cottage)

### THE CEREMONY

The Rose Garden, the Greenhouse Terrace, the Greenhouse, the BandStand, the Gardens, and the Great Lawn

- electrical access at ceremony sites provided
- venue signage, parking attendants and golf cart shuttles for guests

### THE COCKTAIL HOUR

The Greenhouse/Greenhouse Terrace and Garden House

- electrical access provided
- bistro lighting over the large patio and courtyard
- mismatched wooden seating included
- Garden House for lounge area/cigar room, complete with working fireplace
- 1890s Greenhouse, complete with chandeliers + bistro lighting

### THE RECEPTION

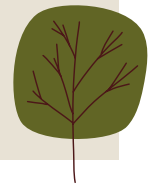
- 40'x100' white frame tent located on a concrete patio, complete with white ceiling draping and four chandeliers
- 20'x20' white catering tent provided, including public water access, electrical access, a refrigerator and freezer
- fire pit access included, with bistro lighting
- Climate-controlled restrooms accessible from the cocktail hour and reception space
- Fans and heaters provided at no additional cost
- On-site venue staff for the entire rental period; golf cart attendees available from parking to the end of the rental term
- On-site rehearsal available; access to the estate for engagement photographs is included
- Access to the venue for assistance with site visits, floor plan layouts, and vendor referrals

### EQUIPMENT INCLUDED

- 75 white resin ceremony chairs with padded seat, set and torn down by venue staff
- 75 white resin reception chairs with padded seat, set and torn down by venue staff
- (10) 30" hi-top tables
- (25) 8' long banquet tables for guest seating
- (8) 6' long tables for miscellaneous use
- (2) 4' rounds for miscellaneous use
- (1) 5' round for miscellaneous use
- (2) rustic farm tables



# THE TRADITIONAL PACKAGE



## AMENITIES:

Private, 34 acre estate to host the wedding and do photographs; no tours or other events during your rental period

### Accessibility Times + Guest Counts:

- 9 a.m. to 11 p.m. (music off at 10 p.m) on Fridays and Saturdays

- 9 a.m. to 10 p.m. (music off at 9 p.m) on Sundays

- up to 225 guests for the wedding

*(Fridays & Sundays: \$7,500 | Saturdays July/August: \$8,900 | Saturdays May/June/Sept/Oct: \$9,400)*

Separate bridal suites for the couple (the den + cottage)

### THE CEREMONY

The Rose Garden, the Greenhouse Terrace, the Greenhouse, the BandStand, the Gardens, and the Great Lawn

- electrical access at ceremony sites provided

- venue signage, parking attendants and golf cart shuttles for guests

### THE COCKTAIL HOUR

The Greenhouse/Greenhouse Terrace and Garden House

- electrical access provided

- bistro lighting over the large patio and courtyard

- mismatched wooden seating included

- Garden House for lounge area/cigar room, complete with working fireplace

- 1890s Greenhouse, complete with chandeliers + bistro lighting

### THE RECEPTION

- 40'x100' white frame tent located on a concrete patio, complete with white ceiling draping and four chandeliers

- 20'x20' white catering tent provided, including public water access, electrical access, a refrigerator and freezer

- fire pit access included, with bistro lighting

- Climate-controlled restrooms accessible from the cocktail hour and reception space

- Fans and heaters provided at no additional cost

- On-site venue staff for the entire rental period; golf cart attendees available from parking to the end of the rental term

- On-site rehearsal available; access to the estate for engagement photographs is included

- Access to the venue for assistance with site visits, floor plan layouts, and vendor referrals

### EQUIPMENT INCLUDED

- 225 white resin ceremony chairs with padded seat, set and torn down by venue staff

- 225 white resin reception chairs with padded seat, set and torn down by venue staff

- (10) 30" hi-top tables

- (25) 8' long banquet tables for guest seating

- (8) 6' long tables for miscellaneous use

- (2) 4' rounds for miscellaneous use

- (1) 5' round for miscellaneous use

- (2) rustic farm tables